



REGIONAL SPECIALISED METEOROLOGICAL CENTRE-TROPICAL CYCLONES, NEW DELHI TROPICAL WEATHER OUTLOOK

DEMS-RSMC TROPICAL CYCLONES NEW DELHI DATED 01.01.2024

TROPICAL WEATHER OUTLOOK FOR NORTH INDIAN OCEAN (THE BAY OF BENGAL AND THE ARABIAN SEA) VALID FOR NEXT 168 HOURS ISSUED AT 0600 UTC OF 01.01.2024 BASED ON 0300 UTC OF 01.01.2024.

BAY OF BENGAL:

YESTERDAY'S CYCLONIC CIRCULATION OVER NORTHEAST BAY OF BENGAL & ADJOINING BANGLADESH AT 1.5 KM ABOVE MEAN SEA LEVEL HAS BECOME LESS MARKED AT 0300UTC OF TODAY, THE 01ST JANUARY, 2024.

SCATTERED LOW AND MEDIUM CLOUDS WITH EMBEDDED INTENSE TO VERY INTENSE CONVECTION LAY OVER SOUTH BAY OF BENGAL SOUTH OF LAT 10.0N AND MODERATE TO INTENSE CONVECTION LAY OVER SOUTH ANDAMAN SEA.

***PROBABILITY OF CYCLOGENESIS (FORMATION OF DEPRESSION) DURING NEXT 168 HRS:**

24 HOURS	24-48 HOURS	48-72 HOURS	72-96 HOURS	96-120 HOURS	120-144 HOURS	144-168 HOURS
NIL	NIL	NIL	NIL	NIL	NIL	NIL

*NOTE: EVERY 24HR FORECAST IS VALID UPTO 0300 UTC (0830 IST) OF NEXT DAY

ARABIAN SEA:

YESTERDAY'S LOW-PRESSURE AREA OVER THE WEST EQUATORIAL INDIAN OCEAN AND ADJOINING SOUTHEAST ARABIAN SEA LAY OVER SOUTHEAST ARABIAN SEA & ADJOINING WEST EQUATORIAL INDIAN OCEAN AT 0300UTC OF TODAY, THE 01ST JANUARY, 2024 WITH ASSOCIATED CYCLONIC CIRCULATION EXTENDING UP TO MID-TROPOSPHERIC LEVELS. IT IS LIKELY TO MOVE NEARLY NORTHWARDS AND BECOME WELL-MARKED LOW-PRESSURE AREA OVER SOUTHEAST ARABIAN SEA DURING THE NEXT 24 HOURS.

SCATTERED TO BROKEN LOW AND MEDIUM CLOUDS WITH EMBEDDED INTENSE TO VERY INTENSE CONVECTION LAY OVER SOUTH ARABIAN SEA MALDIVES AREA LAKSHADWEEP ISLANDS AREA AND COMORIN AREA (MINIMUM CTT MINUS 93 DEG CEL). SCATTERED LOW AND MEDIUM CLOUDS WITH EMBEDDED ISOLATED WEAK TO MODERATE CONVECTION LAY OVER NORTHWEST & CENTRAL ARABIAN SEA.

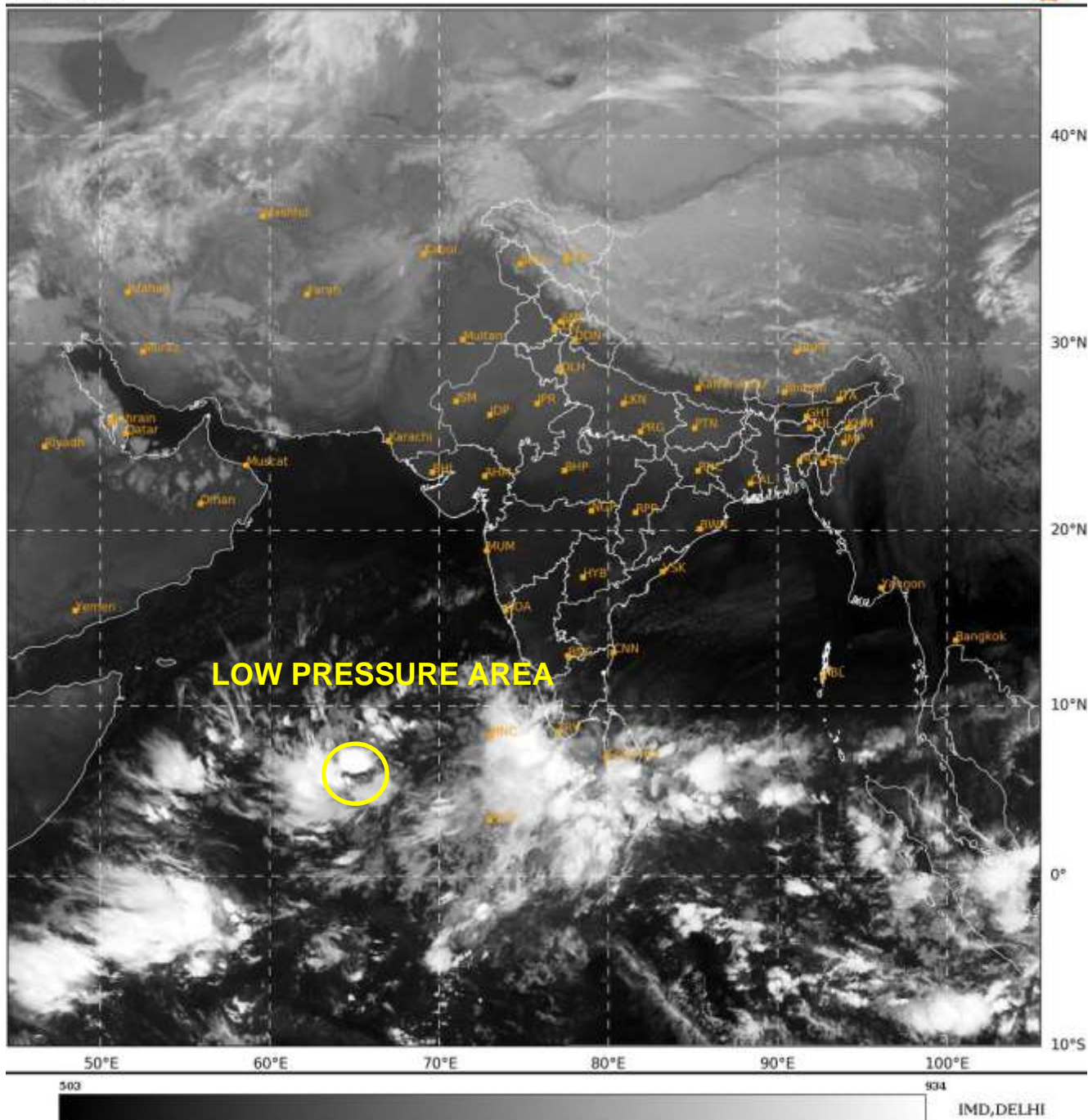
***PROBABILITY OF CYCLOGENESIS (FORMATION OF DEPRESSION) DURING NEXT 168 HRS:**

24 HOURS	24-48 HOURS	48-72 HOURS	72-96 HOURS	96-120 HOURS	120-144 HOURS	144-168 HOURS
LOW	LOW	NIL	NIL	NIL	NIL	NIL

*NOTE: EVERY 24HR FORECAST IS VALID UPTO 0300 UTC (0830 IST) OF NEXT DAY

SAT : INSAT-3D IMG
IMG_TIR1 10.8 um
LIC Mercator

01-01-2024/(0300 to 0327) GMT
01-01-2024/(0830 to 0857) IST



Cloud distribution: (a) Isolated: <25%, Scattered:25-50%, Broken: 51-75%, Solid:>75%, Convection Intensity: (a) Weak: Cloud Top Temperature (CTT) >-25°C, (b) Moderate: CTT: - 25°C to -40°C, (c) Intense: CTT: - 41°C to -70°C and (d) Very Intense: : Less than -70°C
PROBABILITY OF CYCLOGENESIS (FORMATION OF DEPRESSION):NIL: 0%, LOW: 1-33%, , MODERATE: 34-66% AND HIGH: 67-100%
This is a guidance Bulletin for WMO/ESCAP Panel Member countries. Visit respective National websites for Country specific Bulletins